



AUTO CUT DOUBLE STUFFER



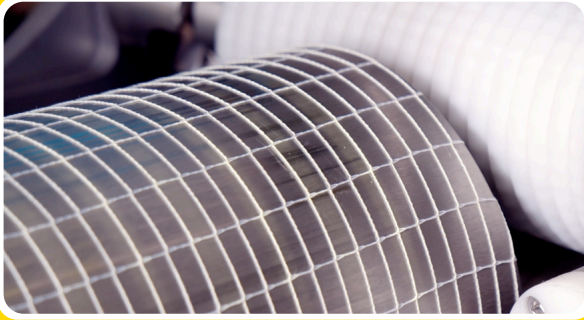
**The Only Fully Automated Netting
System Operated by One Person**



DS1200AC3

Faster Processing. Smarter Profits.

Save Netting & Reduce Costs



Advanced sensors and precision controls ensure every cut is made close to the meat—leaving short, clean tails for a neater finish, less waste, and improved product presentation.

Reduce Downtime



Load more net per tube to minimise changes and reduce downtime on the line.

460mm Tubes

20m per tube = 50 changes per 1,000m

700mm Tubes

50m per tube (100m total on the stuffer) = 10 changes per 1,000m

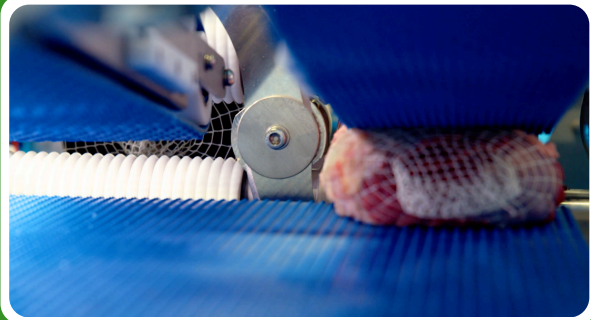
Result: 40 fewer changes per 1,000m—saving time, labour, and reducing disruption.

Eliminate Springback



Springback occurs if the netting isn't applied squarely, causing blade cuts to damage multiple rubber strands when portioning. The DS1200AC3's unique centralising roller system ensures an even, square netting application, eliminating springback.

Eliminate Springout



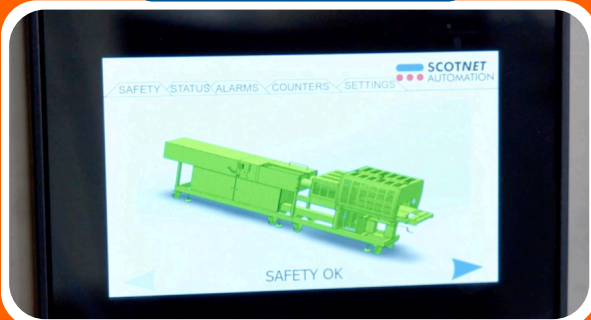
Springout occurs from lengthwise compression during stuffing when the joint is pushed into the netting, causing the meat to spring out of the ends when portioned. Our bespoke roller system pulls the meat, elongating it, enhancing shelf appearance.

Maintenance Simplified



Reduce your engineering cost and hygiene downtime due to the DS1200AC3's easy access and tool-free belt removal.

Advanced HMI



Operating the machine is simple and secure – The intuitive touchscreen interface puts key functions, efficiency reporting, and diagnostics at your fingertips, helping maintain control and optimise every cycle.

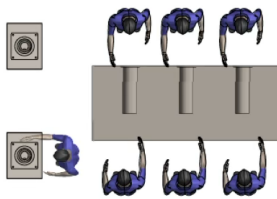
The Ultimate Double Stuffer – Redefining Speed & Efficiency

Milestones

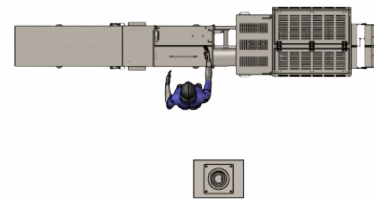
Total savings: £270,000 per year
ROI achieved in under 8 months

STUFFING METHOD	OUTPUT	OPERATORS	SHIFTS	AVG WAGE COSTS	OPERATOR COST
MANUAL	1000 Units P/H	7	12 hrs x 5 Days	£30k pp	$7 \times 30k \times 1.5 = \text{£}315,000$
AC3	1000 Units P/H	1	12 hr x 5 Days	£30k pp	$1 \times 30k \times 1.5 = \text{£}45,000$

Manual Stuffing



DS1200AC3

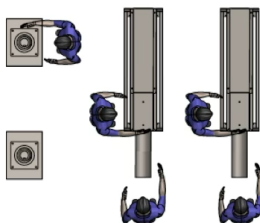


Milestones

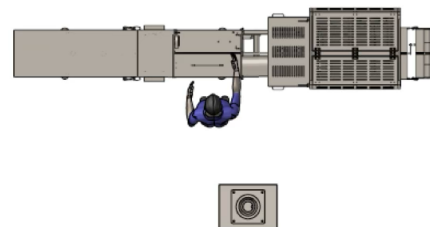
Total savings: £180,000 per year
ROI achieved in under 11 months

STUFFING METHOD	OUTPUT	OPERATORS	SHIFTS	AVG WAGE COSTS	OPERATOR COST
SS500	1000 Units P/H	5	12 hrs x 5 Days	£30k pp	$5 \times 30k \times 1.5 = \text{£}225,000$
AC3	1000 Units P/H	1	12 hr x 5 Days	£30k pp	$1 \times 30k \times 1.5 = \text{£}45,000$

Single Stuffer



DS1200AC3

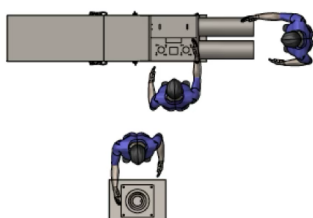


Milestones

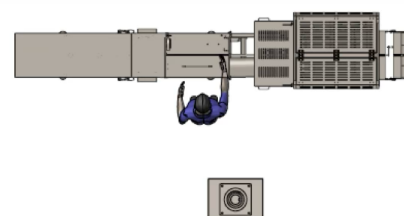
Total savings: £90,000 per year
ROI achieved in under 21 months

STUFFING METHOD	OUTPUT	OPERATORS	SHIFTS	AVG WAGE COSTS	OPERATOR COST
P7s	1000 Units P/H	3	12 hrs x 5 Days	£30k pp	$3 \times 30k \times 1.5 = \text{£}135,000$
AC3	1000 Units P/H	1	12 hr x 5 Days	£30k pp	$1 \times 30k \times 1.5 = \text{£}45,000$

Double Stuffing

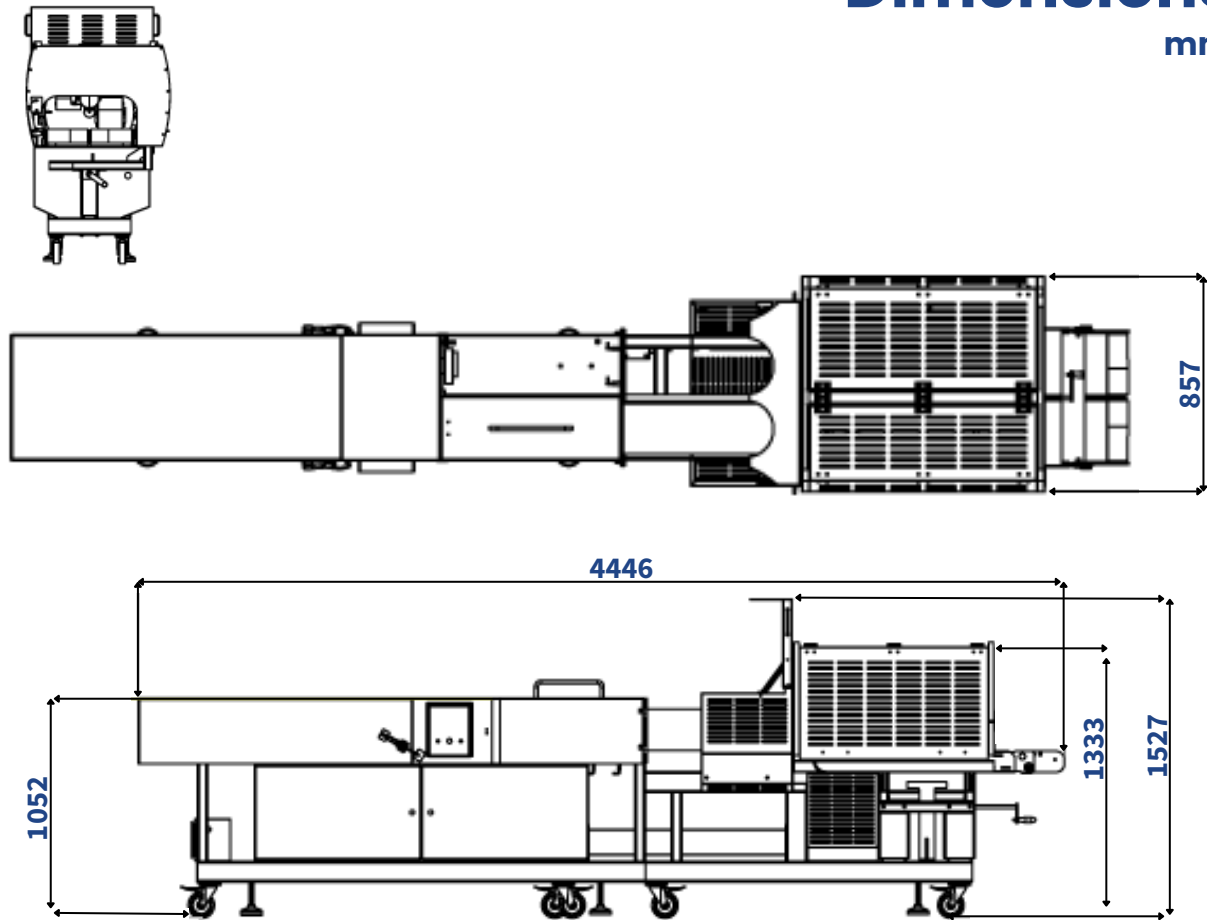


DS1200AC3



Dimensions

mm



Electrical

6amp, 1.2kW 220-240 volt 3 pin single phase.



Speed

>1200 joints per hour.



Pneumatic

80-102 PSI (5.5 - 7 BAR.)
Consumption approx 1415 litres per minute.



Weight

800kg



SCAN HERE

For more information, including videos of the Autocutter in action, simply scan the QR code and follow the links!

T: +44 1355 237041 | E: info@scotnet.com | W: scotnet.com



Find us: [in](#) [v](#) [i](#) [f](#) [d](#)